

GCE N(A)- & N(T)-LEVEL EXAMINATION
Result release on 16 December 2024 (Mon)

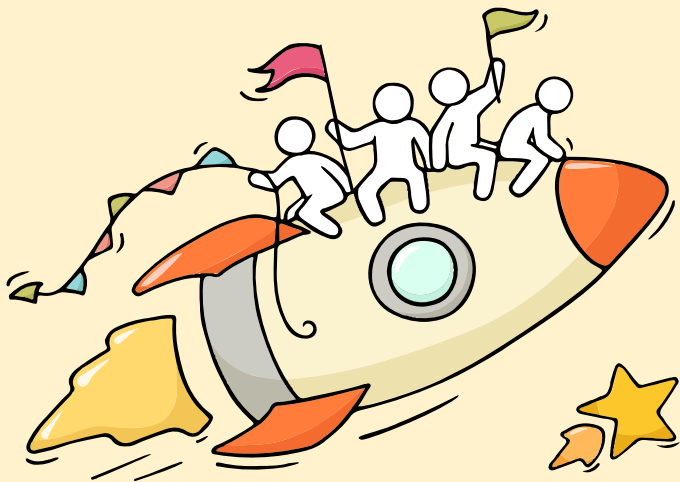


**The N-Level
examination is not
the destination.**

**It is part of your
education journey.**

Dear students,

You have worked hard to reach this stage. Let's celebrate your efforts!

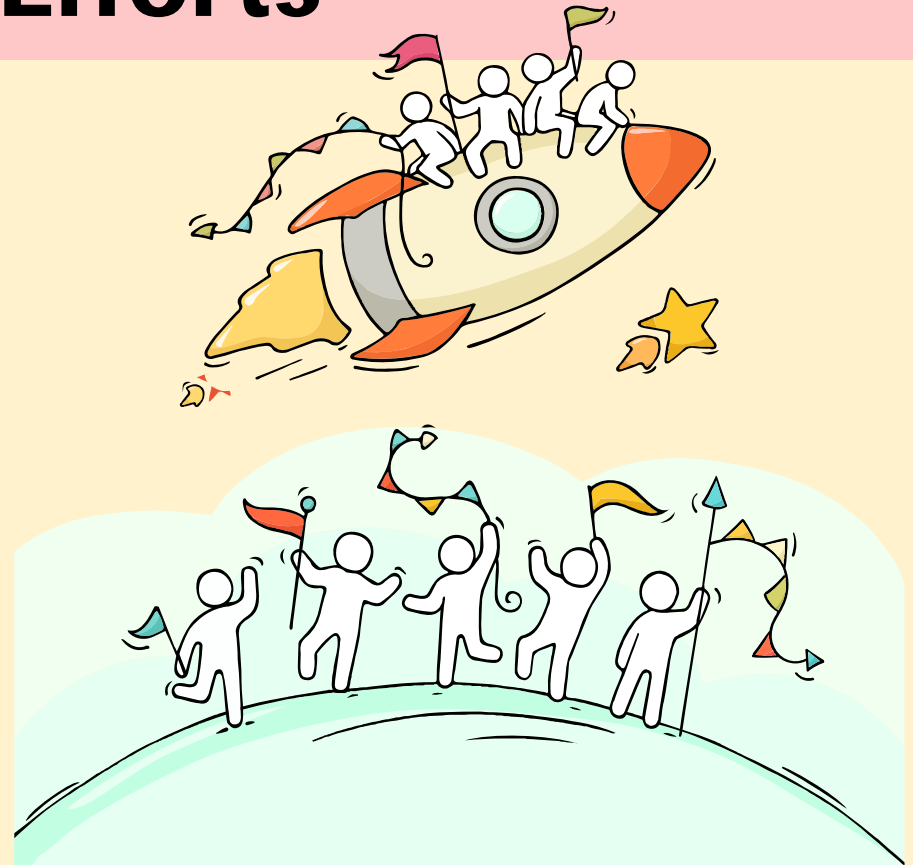


Celebrate Efforts

The N-Level is a culmination of years of hard work and perseverance.

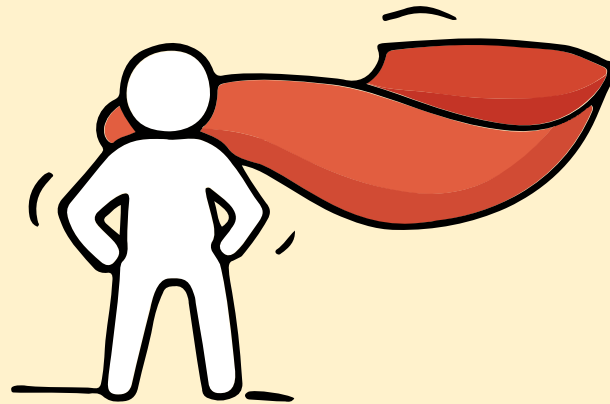
Let's celebrate our efforts regardless of the results.

Let's mark the end of the academic year by reflecting together on all our previous successes in school and the challenges we have overcome!





Remember that while **everyone's educational journey is different, we can each have a fulfilling outcome!**



Documents you will receive

1. Result Slip
2. N-Level Certificate
3. Form N (For All School Leavers Who Qualify For ITE)
 - ***Contains courses you are eligible for***
4. ITE Admission and Course Information brochure
(For All School Leavers Who Qualify For ITE)

Application for Institute of Technical Education (ITE)

- (a) Submit application for course (ITE application portal) between **16 Dec (Mon) 2.30pm – 19 Dec (Thur) 5pm**
- Hard copy application forms will also be available at the Customer & Visitor Centres at the three ITE Colleges.
 - Applicants who wish to collect hard copy applications from the Customer & Visitor Centres should book an appointment first by contacting the respective colleges via the email addresses or phone numbers provided at <https://www.ite.edu.sg/who-we-are/get-in-touch>
- (b) Courses under Aptitude-based Admissions – check interview details online via ITE application portal on **20 Dec (Fri), 2pm**

Institute of Technical Education (ITE)

Release of posting results and acceptance of ITE offers

(a) ITE posting results – check online via ITE application portal:

30 Dec (Mon), 9am

(b) Accept/reject offer via ITE application portal between:

30 Dec 2024 (Mon) – 9am and 3 Jan 2025 (Fri),

11.59pm

Direct-Entry-Scheme to Polytechnic Programme (DPP) - for 4NA only

- Sec 4N(A) students who obtain an **ELMAB3 aggregate of 19 points or less** have the option of enrolling in the **DPP** at ITE.

Application for Direct-Entry-Scheme to Polytechnic Programme (DPP) - for 4NA only

- The Direct-Entry-Scheme to Polytechnic Programme (DPP) prepares candidates for progression into selected polytechnic diploma courses via a two-year *Higher Nitec* course at ITE.
- Under the DPP, candidates who successfully complete their *Higher Nitec* course and attain the required minimum qualifying *Higher Nitec* Grade Point Average are guaranteed a place in a polytechnic diploma course mapped to their *Higher Nitec* course.
- School candidates eligible for the DPP will receive a copy of Form N from their secondary schools, inviting them to apply for the DPP.
- Apply for DPP via ITE application portal:
16 Dec (Mon) 2.30pm – 19 Dec (Thur) 5pm

Release of DPP Posting Results and Acceptance of DPP Offers

- (a) Check DPP posting results via ITE application portal on **20 Dec (Fri), 2pm**
- (b) To accept/reject DPP offer : Log on to ITE application portal: **20 Dec (Fri), 2pm to 26 Dec (Wed), 11.59 pm**
- (c) If you do not accept the offer, or do not have a confirmed place in DPP, you will **need to report to NV on 2 Jan 2025 for Sec 5NA**

** Being eligible to apply for the DPP does not guarantee a successful placement in a DPP Higher NITEC course.*

For more information on the DPP and the PFP, please visit these websites:

- Direct-Entry-Scheme to Polytechnic Programme (DPP)
(<https://www.ite.edu.sg/admissions/full-time-courses/higher-nitec-dpp>)
- Polytechnic Foundation Programme (PFP)
- (<https://pfp.polytechnic.edu.sg/PFP/index.html>)

Application for Polytechnic Foundation Programme (PFP)

- The Polytechnic Foundation Programme (PFP) is a diploma-specific foundation programme conducted over two academic semesters at the polytechnics.
- It caters to school candidates in the Secondary 4 N(A) course in 2024 who have decided to pursue a polytechnic education and meet the PFP eligibility requirements at the end of Secondary 4.

Application for Polytechnic Foundation Programme (PFP)

Eligibility

Sec 4N(A) students who have sat for their GCE N-Level examinations in 2024 as a school candidate are eligible to apply for the PFP if they:

- (a) Obtain an ELMAB3 aggregate **not** exceeding **12** points **prior to** deducting CCA bonus points; **and**
- (b) Meet the following subject-specific requirements of the courses they are applying for:

For Courses featured in Group 1	Minimum Required Grades
English Language Syllabus A	3
Mathematics (Syllabus A / Additional)	3
One of the following relevant subjects: <ul style="list-style-type: none">• Science (Physics, Chemistry)• Science (Physics, Biology)• Science (Chemistry, Biology)• Food and Nutrition/Nutrition and Food Science• Design and Technology	3
Any two other subjects excluding CCA	4

Application for Polytechnic Foundation Programme (PFP)

For Courses featured in Group 2	Minimum Required Grades
English Language Syllabus A	2
Mathematics (Syllabus A / Additional)	3
One of the following relevant subjects: <ul style="list-style-type: none">• Principles of Accounts• Literature in English• History• Humanities (Social Studies, Geography)• Humanities (Social Studies, History)• Humanities (Social Studies, Literature in English)• Geography• Art	3
Any two other subjects excluding CCA	4

Application for Polytechnic Foundation Programme (PFP)

- (a) **Students interested in applying for PFP should first report to NV on 2 Jan 2025 (Thur) for Sec 5NA while awaiting notification and confirmation of a place in PFP.**

- (b) Applications for the PFP will open in January 2025, on the day of the GCE Ordinary-Level (O-Level) Examinations results release.

Candidates eligible for the PFP will receive a copy of Form P on the same day, inviting them to apply for the PFP.

- (c) Students who accept their PFP offers will withdraw from Sec 5 by end Jan 2025

Being eligible to apply for the PFP does not guarantee a successful placement in a PFP course.

Can't decide on DPP or PFP?

Option 1

- Apply for DPP in Dec 2024
- If you are eligible for PFP after release of GCE O-Level results, you will receive a PFP eligibility form
- If you accept the PFP offer, you will withdraw from DPP

Option 2

- Progress to Sec 5
- Apply for both PFP and DPP upon release of GCE O-Level results in Jan 2025
- If you are offered a place in both PFP and DPP, you may **only accept one offer**

Secondary 5N(A) for O-Level 2025

- (a) Obtained an ELMAB3 aggregate score of 19 points or less (excluding bonus points); and
- (b) Obtained at least an N(A)-Level Grade 5 for all subjects used in the computation of ELMAB3;

Grade 6 for subjects taken at the GCE N(A)-Level cannot be considered for the computation of the ELMAB3 aggregate score.

Provision of Education and Career Guidance (ECG) services

- Candidates are encouraged to explore the range of education and career pathways available to them to make informed decisions about their next steps. They may refer to the following websites for more information: MOE's CourseFinder (<https://www.moe.gov.sg/coursefinder>) on offerings and courses in the polytechnics and ITE
- MySkillsFuture Student Portal (<https://go.gov.sg/mysfsec>) on education and career pathways
- School candidates may also consult their teachers or ECG Counsellors in their respective secondary schools about their next steps. Alternatively, they can make an ECG counselling appointment via the ECG Centre @ MOE at <https://go.gov.sg/moe-ecg-centre> . The ECG Centre @ MOE offers online or phone counselling services from 9 to 24 December 2024, from 9.00 am to 5.00 pm on weekdays and 9.00 am to 12.00 pm on Saturdays.


Key Dates for Jan 2025 Intake Exercise

Key Activity	Period for 2-Year and 3-Year Nitec Courses, and 3-Year and 4-year Higher Nitec courses	Remarks
1st Phase (Main Phase)		
Application	16 Dec 2024 (2.30pm) to 19 Dec 2024 (5pm)	Apply through the Internet at https://www.ite.edu.sg with NRIC / FIN and Date of Birth. You may also apply using SingPass.
Release of Results	30 Dec 2024 at 9am	Check results at https://istudent.ite.edu.sg with web ID and password
Acceptance of Course Offer Period	30 Dec 2024 to 3 Jan 2025	Accept course offer at https://istudent.ite.edu.sg with web ID and password
2nd Phase (Late Application/Appeal Phase)		
Application	30 Dec 2024 to 3 Jan 2025	Apply through the Internet at https://istudent.ite.edu.sg with NRIC / FIN and Date of Birth. You may also apply using SingPass.
Release of Results	10 Jan 2025 at 9am	Check results at https://istudent.ite.edu.sg with web ID and password
Acceptance of Course Offer Period	10 Jan 2025 to 12 Jan 2025	Accept course offer at https://istudent.ite.edu.sg with web ID and password
3rd Phase (Final Top-up Phase)		
Application	1 st Top-up Phase Application - 10 Jan to 17 Jan 2025 2 nd Top-up Phase Application - 23 Jan to 7 Feb 2025	Apply through the Internet at https://istudent.ite.edu.sg with NRIC / FIN and Date of Birth. You may also apply using SingPass.
Release of Results	1 st Top-up Phase - 14 Jan to 23 Jan 2025 2 nd Top-up Phase - 23 Jan to 13 Feb 2025	Check results at https://istudent.ite.edu.sg with web ID and password
Acceptance of Course Offer Period	1 st Top-up Phase - 14 Jan to 23 Jan 2025 2 nd Top-up Phase - 23 Jan to 13 Feb 2025	Accept course offer at https://istudent.ite.edu.sg with web ID and password
Jan 2025 Intake Term Commencement Date: 13 Jan 2025		

RESOURCES FOR STUDENTS


Additional Information For Students

The information listed in the table below will help you to make an informed decision on which choice of courses you could consider applying at ITE.

S/N	Information	Attachment/Link
1	ITE Factsheet 2024	 2024 JIEN Factsheet
2	ITE Course Booklet 2025	https://www.ite.edu.sg/courses/full-time-courses/download-ite-course-booklet
3	Information on Progression Opportunities (From <i>Nitec</i> Courses to <i>Higher Nitec</i> and Technical diplomas)	https://www.ite.edu.sg/admissions/full-time-courses/nitec-and-3-year-higher-nitec/progression-opportunities
4	Information on Progression Opportunities (from <i>Higher Nitec</i> courses to diploma courses)	https://www.ite.edu.sg/admissions/full-time-courses/higher-nitec/academic-progression

To Do – For 5NA (2025)

- (a) Inform your FT on your decision to go to 5NA by **23 Dec (Mon), 12pm**
- (b) Report to North Vista Secondary on **2 Jan 2025 (Thur)**



Education & Career Guidance



Mrs Jaslyn

Interested to discover your values, interests, personality and strengths?

Want to explore the post-secondary education options out there?



Link to make appointment:
go.gov.sg/nv-nlevel2024